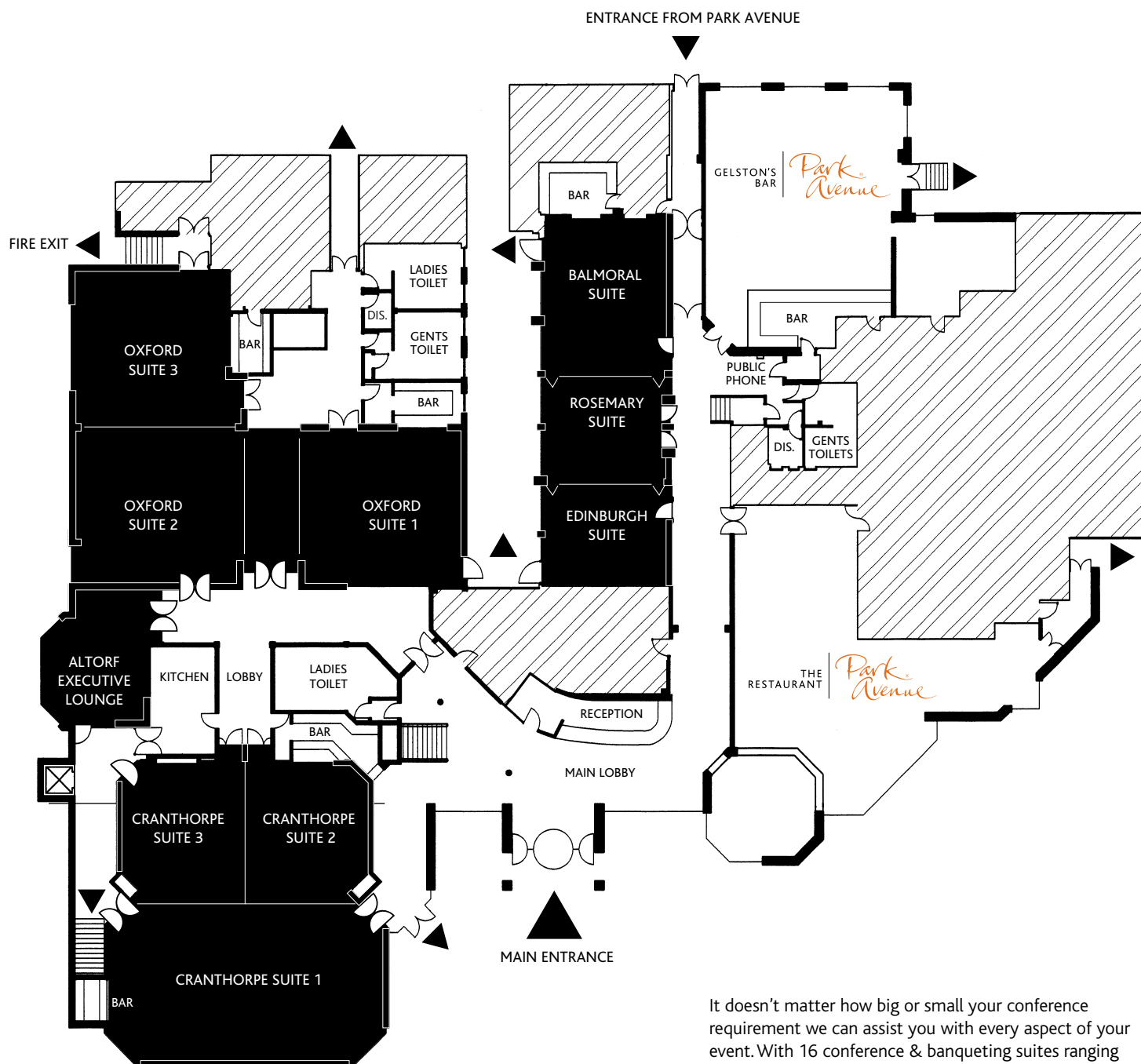


# PARK AVENUE HOTEL

## GROUND FLOOR PLAN



It doesn't matter how big or small your conference requirement we can assist you with every aspect of your event. With 16 conference & banqueting suites ranging in size, smaller interview style rooms holding up to 12 delegates or the larger suite which can accommodate up to 250 delegates. Let the Park Avenue Hotel make your event possible with its enviable conference facilities, complimentary wireless internet access and 150 free onsite parking spaces.

All sorts of events happen at The Park Avenue – international trade fairs, gala dinners, corporate events, annual party conferences, weddings and family gatherings, training sessions and interviews.

We can source any equipment you require please ask the conference organiser for further details.

Our professional, dedicated and courteous staff will cater to your every detail.

For enquiries please contact our team on 028 9065 6520 or email [events@parkavenuehotel.co.uk](mailto:events@parkavenuehotel.co.uk)

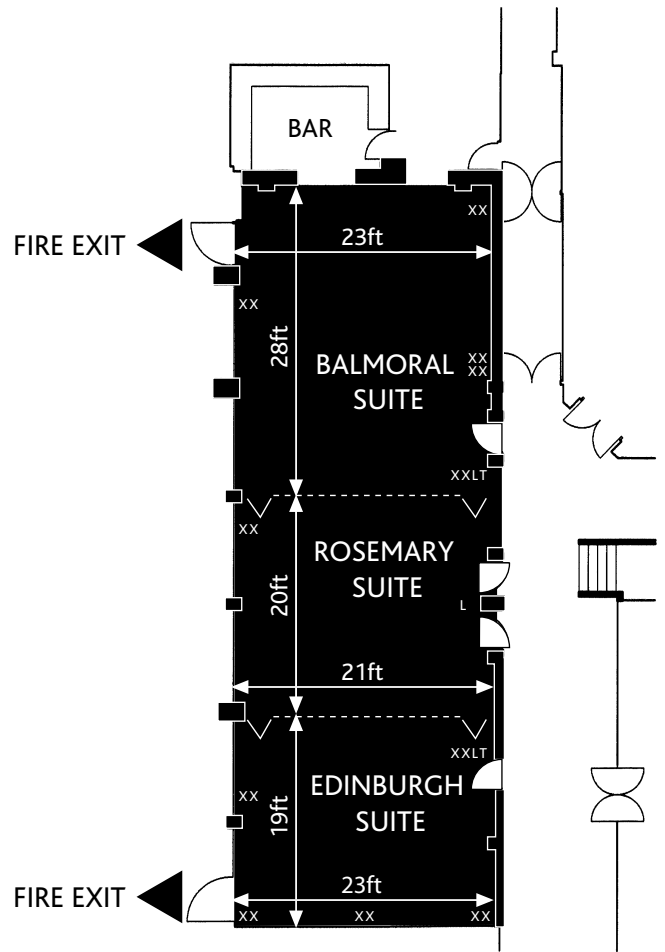
# PARK AVENUE HOTEL

THE BALMORAL SUITE  
 THE ROSEMARY SUITE  
 THE EDINBURGH SUITE

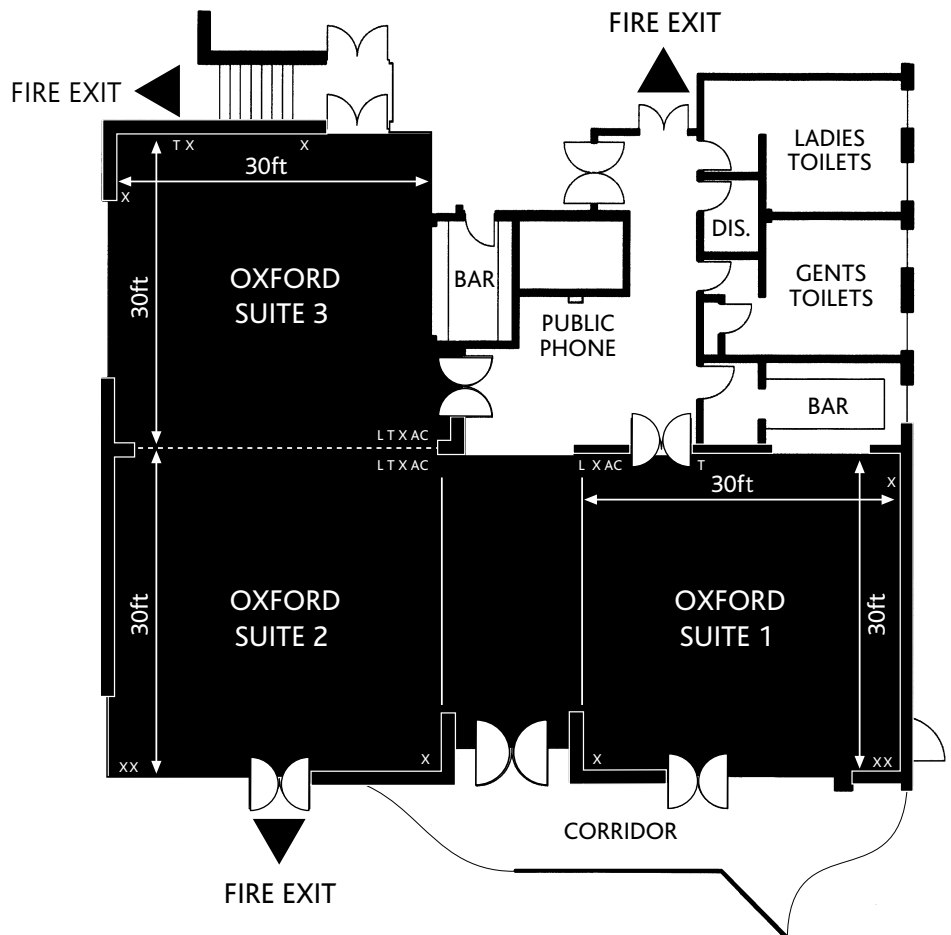
	SIZE	CEILING HEIGHT
Balmoral Suite	28ft x 23ft 8500mm x 7000mm	8ft 2600mm
Rosemary Suite	21ft x 20ft 6400mm x 6000mm	8ft 2600mm
Edinburgh Suite	19ft x 23ft 5800mm x 7000mm	8ft 2600mm

THE OXFORD SUITE

	SIZE	CEILING HEIGHT
Oxford Suite 1	30ft x 30ft 9100mm x 9100mm	9ft 2900mm
Oxford Suite 2	30ft x 30ft 9100mm x 9100mm	11ft 3400mm
Oxford Suite 3	30ft x 30ft 9100mm x 9100mm	11ft 3400mm



- X Single socket
- XX Double socket
- AC Air conditioning control
- L Light switch
- T Telephone

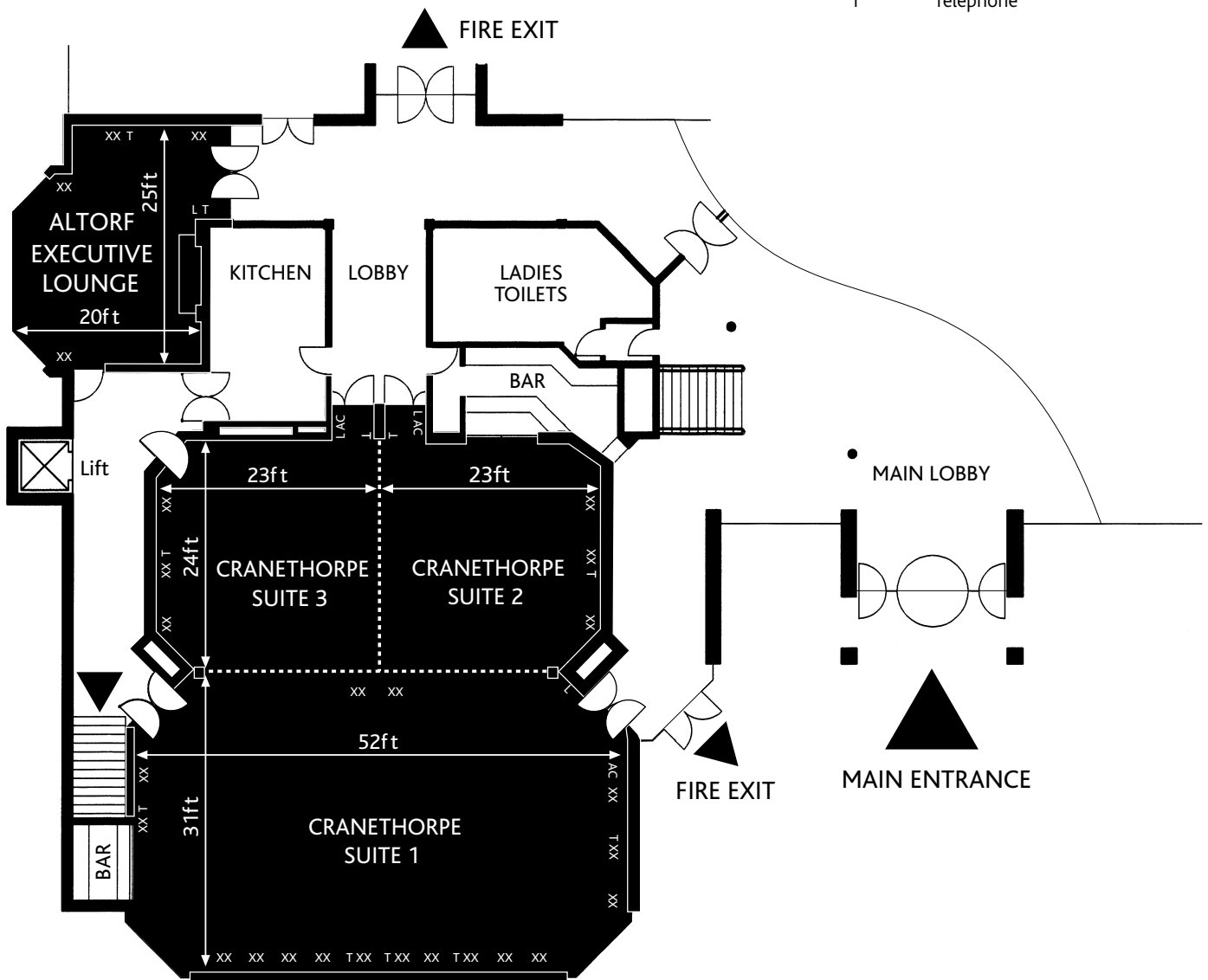


# PARK AVENUE HOTEL

## THE CRANETHORPE SUITE (UPPER GROUND FLOOR)

	SIZE	CEILING HEIGHT
Cranethorpe Suite 1	52ft x 31ft 15800mm x 9500mm	14ft 8ins at highest 4500mm point
Cranethorpe Suite 2	23ft x 24ft 7000mm x 7300mm	9ft 5ins – 10ft 8ins 2900mm – 3300mm
Cranethorpe Suite 3	23ft x 24ft 7000mm x 7300mm	9ft 5ins – 10ft 8ins 2900mm – 3300mm
Altorf Executive Lounge	20ft x 25ft 6100mm x 7600mm	– –

- XX Double socket
- AC Air conditioning control
- L Light switch
- T Telephone

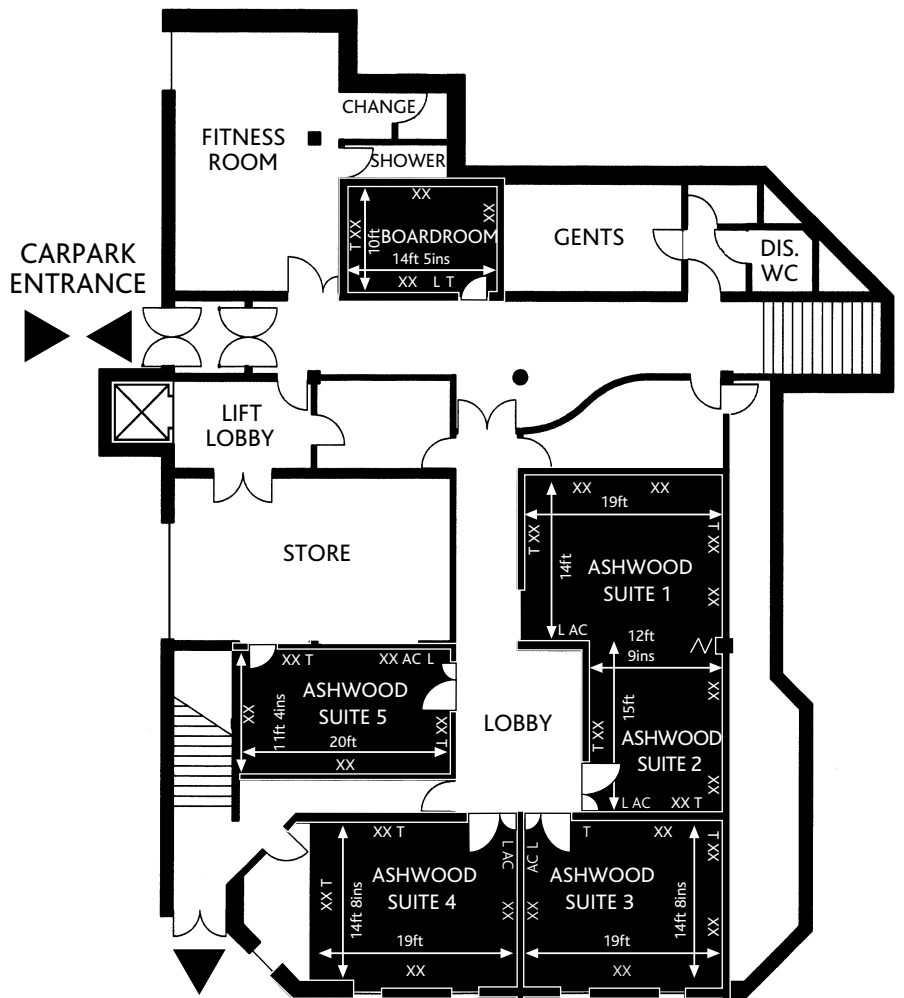


# PARK AVENUE HOTEL

## LOWER GROUND FLOOR SUITE

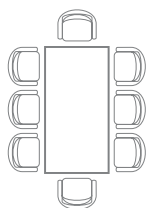
	SIZE	CEILING HEIGHT
Ashwood Suite 1	19ft x 14ft 5800mm x 4300mm	8ft 2400mm
Ashwood Suite 2	12ft 9ins x 15ft 3900mm x 4600mm	8ft 2400mm
Ashwood Suite 3	19ft x 14ft 8ins 5800mm x 4500mm	8ft 2400mm
Ashwood Suite 4	19ft x 14ft 8ins 5800mm x 4500mm	8ft 2400mm
Ashwood Suite 5	20ft x 11ft 4ins 6000mm x 3460mm	8ft 2400mm
Boardroom	14ft 5ins x 10ft 4400mm x 3000mm	8ft 2400mm

- XX Double Socket
- AC Air Conditioning Control
- L Light Switch
- T Telephone/Data

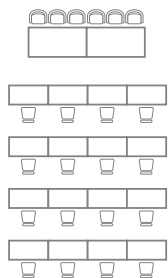


# SEATING PLANS AND CAPACITIES

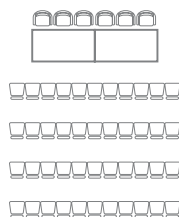
## BOARDROOM



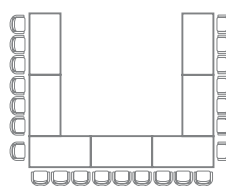
## CLASSROOM



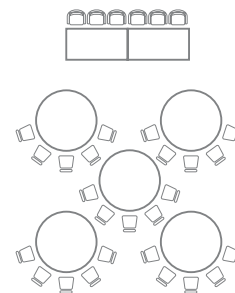
## THEATRE



## U-SHAPE



## CABARET



If you require a specific layout not featured above please do not hesitate to contact our conference co-ordinator.

## SUITE/MEETING ROOM CAPACITIES

SUITES/MEETING ROOMS	LUNCH/DINNER (SEATED)	BOARDROOM	CLASSROOM	THEATRE	U-SHAPE	CABARET
BALMORAL SUITE 1	50	28	30	50	21	15
ROSEMARY SUITE 2	30	18	20	30	–	10
EDINBURGH SUITE 3	30	18	20	30	–	10
OXFORD SUITES (1,2 & 3)	280	–	150	250	–	–
OXFORD SUITE 1	70	36	40	90	27	20
OXFORD SUITE 2	70	36	40	90	27	20
OXFORD SUITE 3	70	36	40	90	27	20
CRANTHORPE SUITES (1,2 & 3)	200 No dance floor	–	100	250	–	90
CRANTHORPE SUITE 1	120	–	70	150	–	50
CRANTHORPE SUITE 2	48	30	30	40	24	15
CRANTHORPE SUITE 3	48	30	30	40	24	15
ALTORF EXECUTIVE LOUNGE	15 – 20	–	–	–	–	–
ASHWOOD SUITE 1	–	12	–	18	8	–
ASHWOOD SUITE 2	–	12	–	18	8	–
ASHWOOD SUITE 3	–	12	–	18	8	–
ASHWOOD SUITE 4	–	12	–	18	8	–
ASHWOOD SUITE 5	–	12	–	18	8	–
ASHWOOD SUITE 1 & 2	–	16	–	26	12	–
THE BOARDROOM	–	8	–	–	–	–

# PARK AVENUE HOTEL

## SUITES AND CAPACITIES

SUITES/MEETING ROOMS	LENGTH	WIDTH	HEIGHT	AREA
BALMORAL SUITE 1	28ft 8.5m	23ft 7m	8ft 6ins to 10ft 6ins 2.6m – 3.2m	644sq ft 60m <sup>2</sup>
ROSEMARY SUITE	21ft 6.4m	20ft 6m	8ft 6ins to 10ft 5ins 2.6m – 3.2m	420sq ft 39m <sup>2</sup>
EDINBURGH SUITE	19ft 5.8m	23ft 7m	8ft 6ins to 10ft 5ins 2.6m – 3.2m	437sq ft 40.6m <sup>2</sup>
OXFORD SUITES (1, 2 & 3)	including foyer			3190sq ft 296m <sup>2</sup>
OXFORD SUITE 1	30ft 9m	30ft 9m	12ft 6ins 3.85m	900sq ft 81m <sup>2</sup>
OXFORD SUITE 2	30ft 9m	30ft 9m	12ft 6ins 3.85m	900sq ft 81m <sup>2</sup>
OXFORD SUITE 3	30ft 9m	30ft 9m	12ft 6ins 3.85m	900sq ft 81m <sup>2</sup>
CRANTHORPE SUITES (1, 2 & 3)	55ft 16.8m	52ft 15.8m		2860sq ft 226m <sup>2</sup>
CRANTHORPE SUITE 1	52ft 15.8m	31ft 9.4m	14ft 8ins 4.5m	1612sq ft 149m <sup>2</sup>
CRANTHORPE SUITE 2	23ft 7m	24ft 7.3m	9ft 5ins to 10ft 8ins 2.9m – 3.3m	552sq ft 52m <sup>2</sup>
CRANTHORPE SUITE 3	23ft 7m	24ft 7.3m	9ft 5ins to 10ft 8ins 2.9m – 3.3m	552sq ft 52m <sup>2</sup>
ALTORF EXECUTIVE LOUNGE	25ft 7.6m	20ft 6.1m		500sq ft 46m <sup>2</sup>
ASHWOOD SUITE 1	14ft 4.3m	19ft 5.8m	9ft 5ins 2.9m	266sq ft 25m <sup>2</sup>
ASHWOOD SUITE 2	15ft 4.6m	12ft 9ins 3.9m	9ft 5ins 2.9m	193sq ft 18m <sup>2</sup>
ASHWOOD SUITE 3	14ft 8ins 4.5m	19ft 5.8m	9ft 5ins 2.9m	281sq ft 26m <sup>2</sup>
ASHWOOD SUITE 4	14ft 8ins 4.5m	19ft 5.8m	9ft 5ins 2.9m	281sq ft 26m <sup>2</sup>
ASHWOOD SUITE 5	20ft 6m	11ft 4ins 3.46m	9ft 5ins 2.9m	228sq ft 21m <sup>2</sup>
ASHWOOD SUITE 1 & 2	29ft 8.9m	19ft at widest 5.8m	9ft 5ins 2.9m	551sq ft 52m <sup>2</sup>
THE BOARDROOM	10ft 3m	14ft 5ins 4.4m	9ft 5ins 2.9m	145sq ft 13.20m <sup>2</sup>